

# LBP-2000

# PARTS CATALOG

REVISION 0

**Canon**

AUG. 2001

**FY8-31FT-000**

## PREFACE

This Parts Catalog contains listings of parts used in the LBP-2000, and the paper feeder Diagrams are provided with the listings to aid the service technician in clearly identifying the item to be ordered.

Whenever ordering parts, consult this Parts Catalog for all of the information pertaining to each item. Be sure to include in the Parts Request the full item description, the item part number, and the quantity. The parts catalog may be revised if there is significant product modification. For minor product modifications, a Service Information Bulletin will be issued.

Canon Inc.

Consumer Imaging Products Quality Assurance Dept.1  
Consumer Imaging Products Quality Assurance Div.  
Office Imaging Products Quality Assurance Center  
5-1, Hakusan 7-chome, Toride-shi, Ibaraki 302-8501, Japan

*COPYRIGHT* © 2001 CANON INC.

Use of this manual should be strictly supervised to avoid disclosure of confidential information.

## LIST OF ORDER AND SERIAL NUMBERS

NAME	REMARKS	ORDER No.	SERIAL No.
LBP-2000	230V 50/60Hz (EUR)	F14-0993-000	URB00001-
	230V 50/60Hz (ASIA)	F14-0993-000	QSY00001-
	120V 60Hz	F14-0933-000	MQB00001-
PF-65		F25-7901-000	XEX00001-



# CONTENTS

## A. ASSEMBLY LOCATION DIAGRAM

- 100. EXTERNAL COVERS, PANELS, ETC.
- 101. TOP COVER ASS'Y
- 102. INTERNAL COMPONENTS 1
- 103. INTERNAL COMPONENTS 2
- 104. INTERNAL COMPONENTS 3
- 105. INTERNAL COMPONENTS 4
- 106. INTERNAL COMPONENTS 5
  
- 260. PRINTER DRIVE ASS'Y
  
  
- 300. CASSETTE
- 310. PICK-UP GUIDE ASS'Y
- 315. MULTI-PURPOSE TRAY ASS'Y
  
  
- 810. FIXING ASS'Y
  
  
- 900. PCB ASS'Y LOCATION DIAGRAM

## OPTION ROM

- E10. OPTION ROM
  
  
- B1. NUMERICAL INDEX  
(LBP-2000)
- B2. NUMERICAL INDEX  
(PAPER FEEDER / HARD DISK / NETWORK BOARD  
/ OPTION ROM)

## PAPER FEEDER

- R11. INTERNAL COMPONENTS
  
- R90. PCB ASS'Y LOCATION DIAGRAM

## HARD DISK

- V10. HARD DISK DRIVE

## NETWORK BOARD

- V11. NETWORK BOARD PCB ASS'Y





# HOW TO USE PARTS LISTS

Assembly Location Diagrams. These diagrams show the locations of major assemblies of the machine. Their names are identified in rectangular boxes. Below each box is the number of the Figure which shows an exploded view of the assembly.

Finding a Parts Number. Refer to the Assembly Location Diagrams and find the Figure Number of the assembly of interest. Turn to the page(s), locate the part on the exploded view, and find its Key Number. Refer to the Parts List on the page facing the exploded view and find the Key Number, Part Number and quantity required for your type of machine.

Note : While looking for a Part Number, pay particular attention to the voltage listed in the SERIAL NUMBER/REMARKS column to ensure that the Part Number selected is for your type of machine. Immediate shipping or action regarding the part depends on using its correct Part Number.

Parts List pages. The Parts List pages contain the following columns and information.

(1) Figure and Key Number column. The first column shows the Figure Number of the illustration corresponding to the Parts List, and the Key Number that identifies the part on the illustration.

(2) Part Number. The second column shows the Part Number for the part. This Number must be used when ordering replacement parts or assemblies described in the description column do not have a Part Number and are not stocked.

Note : The last three digits (suffix) of the Parts Number are called the Revision Number. The Revision Number is changed if the part is modified. Information regarding such changes will be provided by Service Information Bulletins. These Bulletins should be read carefully.

(3) Rank N. Parts marked "N" are service parts, but are not stock items. They are produced on a special-order basis.

(4) Quantity column. The quantity shown in this column is the number of parts used in the Figure. However, the quantity listed for an assembly indicates the number of that assembly per machine. The letters in this column indicate that the quantity of a parts is not specified, allowing the use of the number of parts needed for assembly and that the quantity cannot be mentioned clearly.

(5) Description column. The Description column lists the description that should be used when ordering the part.

(6) Serial Number/Remarks. When there are differences in the specifications of power supply voltage, frequency, etc., the differences are described in words or indicated by one two or three letters in front of the serial number.

(Example)

Serial number ABC00001  
                  ↑ This is the descriptive  
                  indicator.

If a model modified and a part is no longer interchangeable, the serial number of machines for which the part can be used is shown in this column. If there is no indication the part can be used with all models.

Numerical Index. There is a Numerical Index at the end of this catalog; it lists in numerical order every Part Number contained in the Parts Lists. The Numerical Index contains the following columns and information.

(1) Part Number. The first column shows the Part Number.

(2) Figure and Key Number column. The second column lists the Figure and Key Number for each occurrence of the part in the illustrations.



# FIGURE A ASSEMBLY LOCATION DIAGRAM

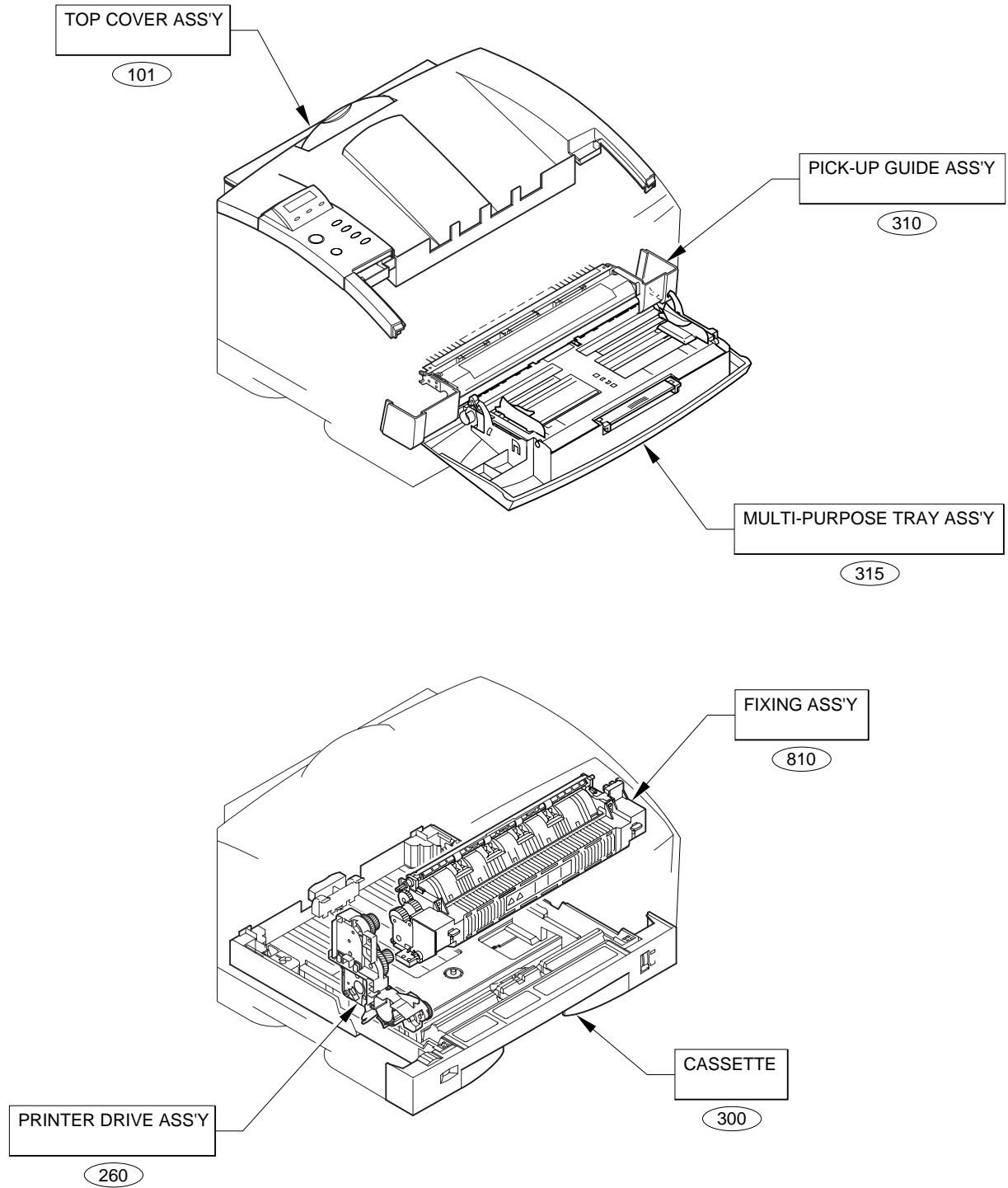


FIGURE 100 EXTERNAL COVERS, PANELS, ETC.

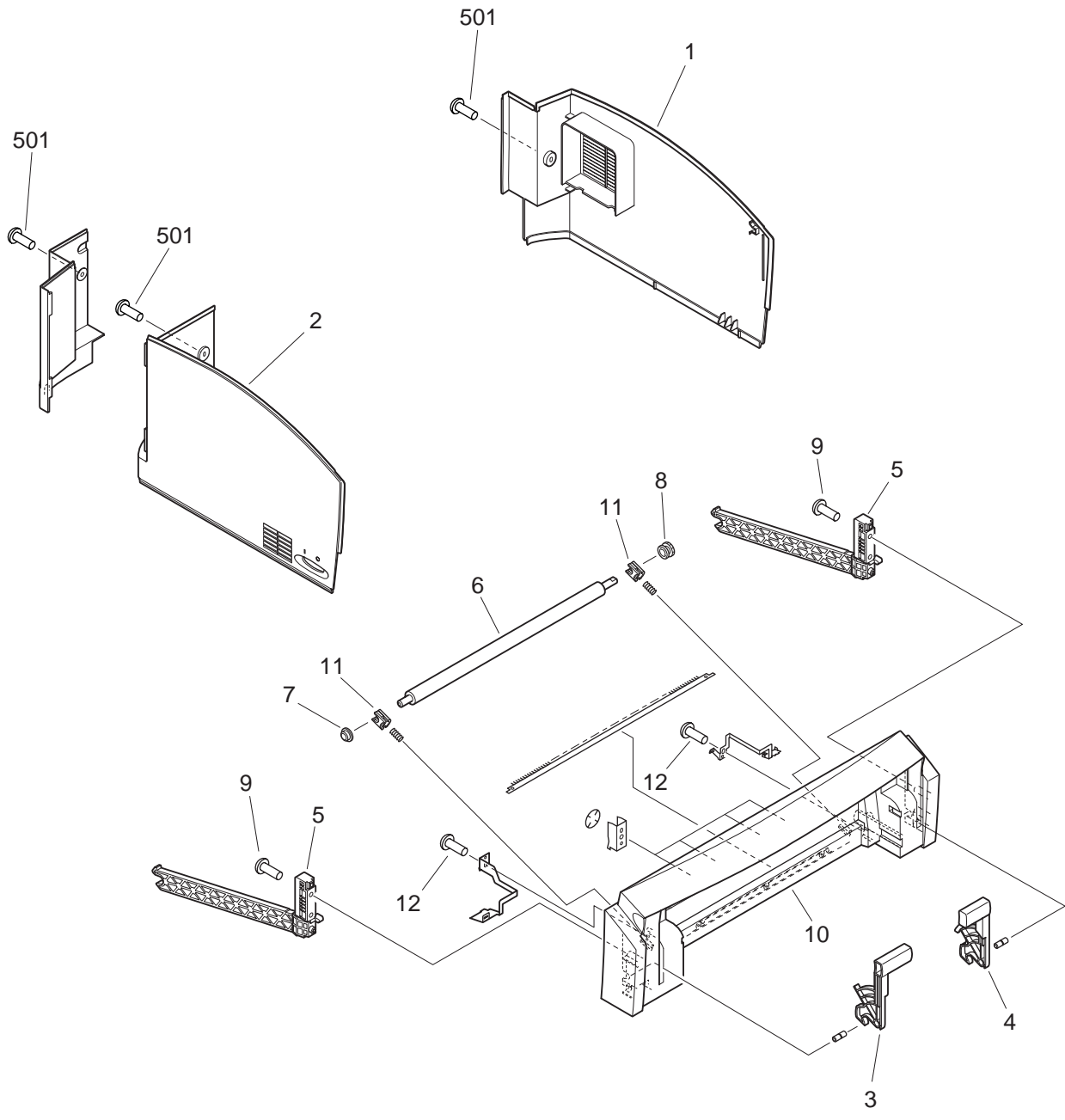


FIGURE & KEY NO.	PART NUMBER	RANK	QTY	DESCRIPTION	SERIAL NUMBER / REMARKS
100 -	NPN		RF	EXTERNAL COVERS, PANELS, ETC.	
1	FB5-8112-000		1	COVER, RIGHT	
2	FB5-8113-000		1	COVER, LEFT	
3	FB5-8011-000		1	LEVER, LOCK, LEFT	
4	FB5-8012-000		1	LEVER, LOCK, RIGHT	
5	FB5-8015-000		2	RAIL, FRONT COVER	
6	FB5-8019-000		1	ROLLER, TRANSFER	
7	FB5-8020-000		1	ROLLER	
8	FS7-0979-000		1	GEAR, 30T	
9	XA9-0606-000		4	SCREW, M4X10	
10	FB5-8010-000		1	COVER, FRONT	
11	FB5-8013-000		2	BUSHING	
12	XA9-0606-000		2	SCREW, M4X10	
501	XB1-2300-606		3	SCREW, MACH., TRUSS HEAD, M3X6	

# FIGURE 101 TOP COVER ASS'Y

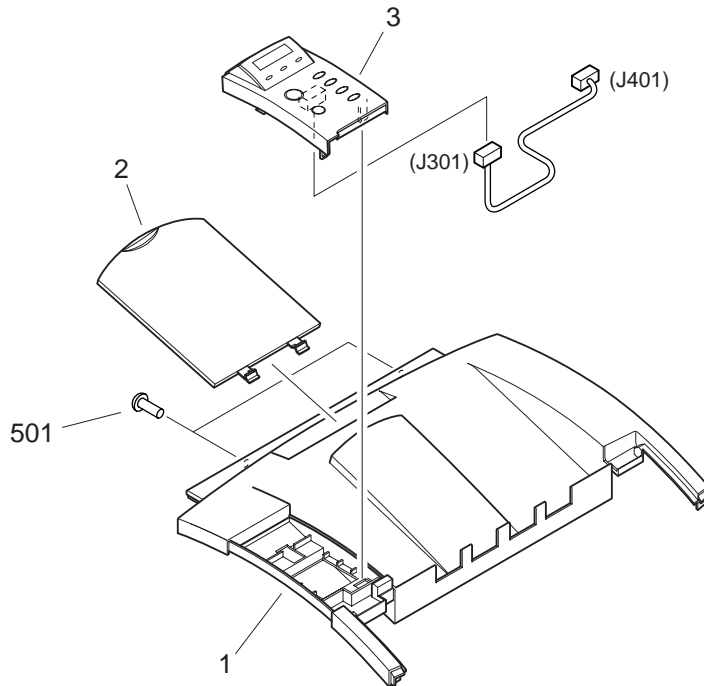


FIGURE & KEY NO.	PART NUMBER	RANK	QTY	DESCRIPTION	SERIAL NUMBER / REMARKS
101 -	NPN		RF	TOP COVER ASS'Y	
1	FB5-8110-000		1	COVER, TOP	
2	FB5-8111-000		1	TRAY	
3	FG6-7135-000		1	PANEL, DISPLAY	
501	XB1-2300-606		2	SCREW,MACH.,TRUSS HEAD,M3X6	
-----					
-----					



# FIGURE 102 INTERNAL COMPONENTS 1

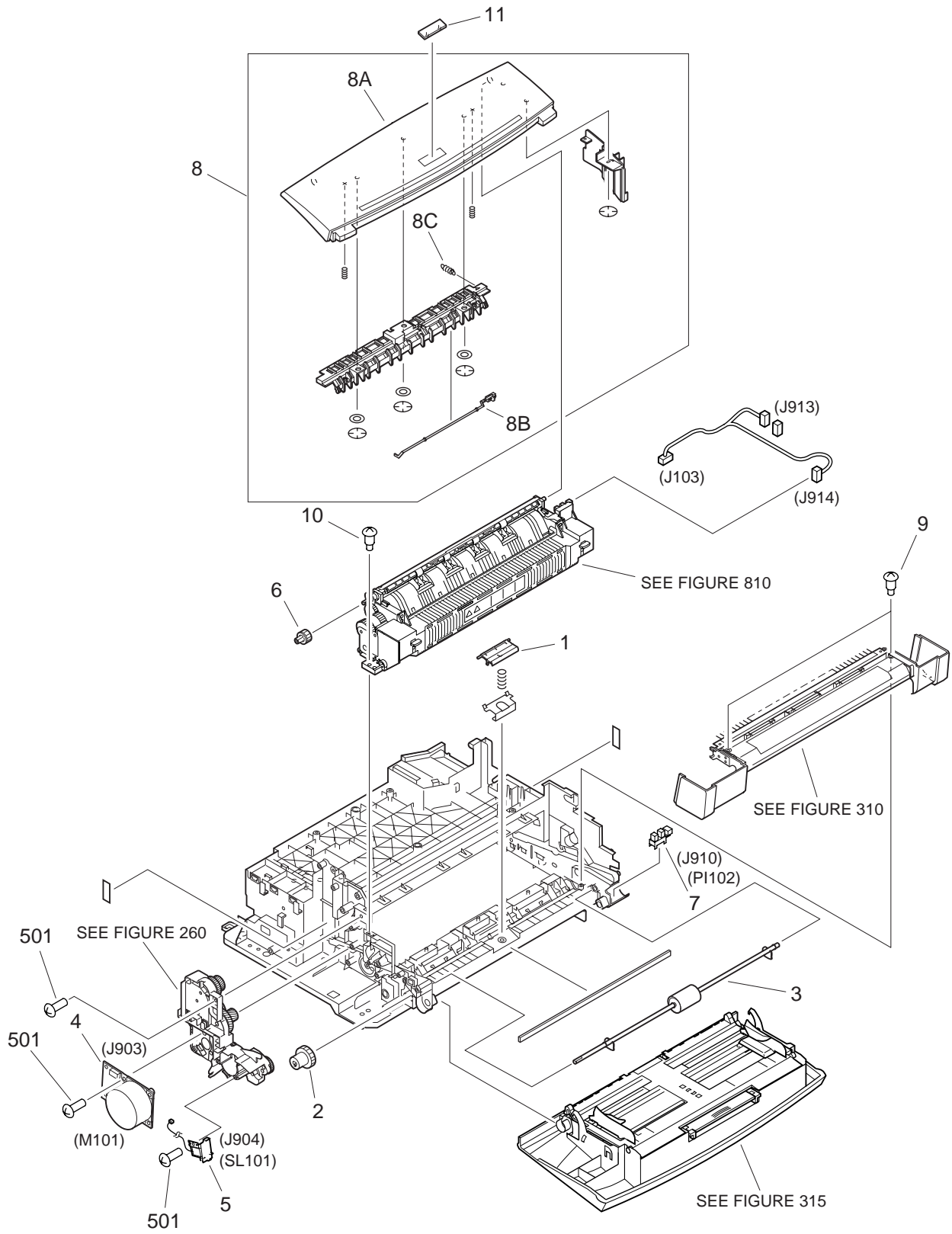


FIGURE & KEY NO.	PART NUMBER	R A N K	Q' T Y	DESCRIPTION	SERIAL NUMBER / REMARKS
102 -	NPN		RF	INTERNAL COMPONENTS 1	
1	FB5-8028-000		1	HOLDER, PAD	
2	FB5-8032-000		1	GEAR, 36T	
3	FF6-1834-000		1	ROLLER, MANUAL FEED PICK-UP	
4	FH6-1837-000		1	MOTOR, PULSE, DC 20W	M101, J903
5	FH6-5001-000		1	SOLENOID	SL101, J904
6	FS7-0982-000		1	GEAR, 15T	
7	WG8-5509-000		1	PHOTO-INTERRUPTER	PI102, J910
8	FG6-7619-000		1	FIXING COVER UNIT	
8A	FB6-2351-000		1	COVER, FIXING	
8B	FB5-8127-000		1	FLAG, SENSOR	
8C	FS7-2601-000		1	SPRING, TENSION	
9	FS1-9170-000		2	SCREW, STEPPED	
10	FS5-9707-000		2	SCREW, STEPPED, M4	
11	FB6-2348-000		1	EMBLEM	
501	XB4-7401-009		5	SCREW, TAPPING, TRUSS HEAD, M4X10	

# FIGURE 103 INTERNAL COMPONENTS 2

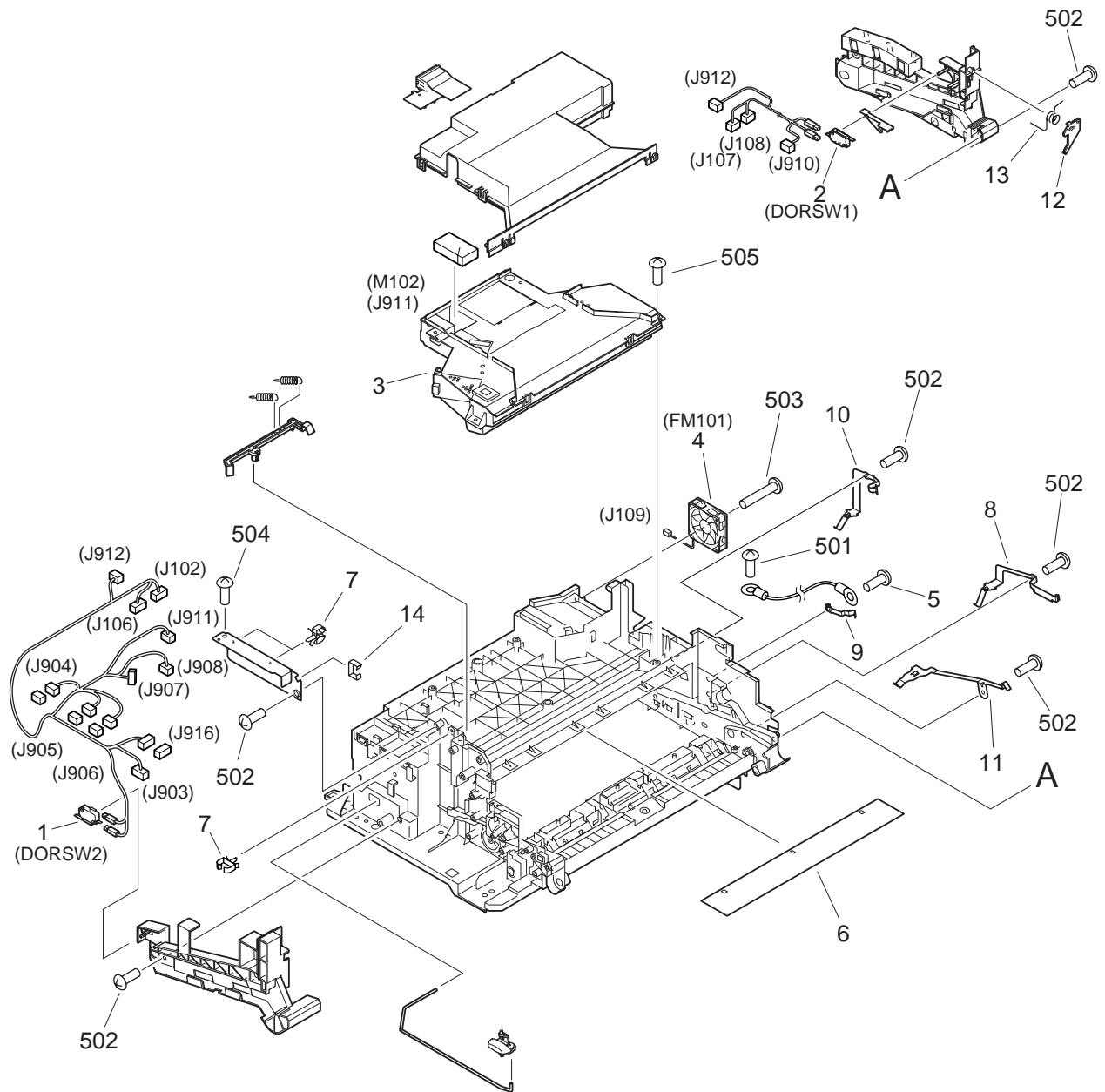




FIGURE & KEY NO.	PART NUMBER	RANK	QTY	DESCRIPTION	SERIAL NUMBER / REMARKS
103 -	NPN		RF	INTERNAL COMPONENTS 2	
1	WC4-5126-000		1	MICROSWITCH	DORSW2
2	WC4-5126-000		1	MICROSWITCH	DORSW1
3	FG6-7127-000		1	LASER/SCANNER UNIT	M102, J911
4	FH6-1835-000		1	FAN	FM101, J109
5	XA9-1206-000		1	SCREW,W/WASHER,M4X12	
6	FB5-8115-000		1	SHEET	
7	WT2-0434-000		5	CLIP, CABLE	
8	FB5-8077-000		1	SPRING, LEAF	
9	FB5-8078-000		1	SPRING, LEAF	
10	FB5-8079-000		1	SPRING, LEAF	
11	FB5-8080-000		1	SPRING, LEAF	
12	FB5-8106-000		1	LEVER, INTERLOCK	
13	FS7-2600-000		1	SPRING, TORSION	
14	WT2-5498-000		1	CLIP, CABLE	
501	XB2-7300-606		1	SCREW,W/WASHER,M3X6	
502	XB4-7401-009		14	SCREW,TAPPING,TRUSS HEAD,M4X10	
503	XB4-7403-509		2	SCREW,TAPPING,TRUSS HEAD,M4X35	
504	XB1-2300-606		1	SCREW,MACH.,TRUSS HEAD,M3X6	
505	XB4-7401-609		4	SCREW,TAPPING,TRUSS HEAD,M4X16	

# FIGURE 104 INTERNAL COMPONENTS 3

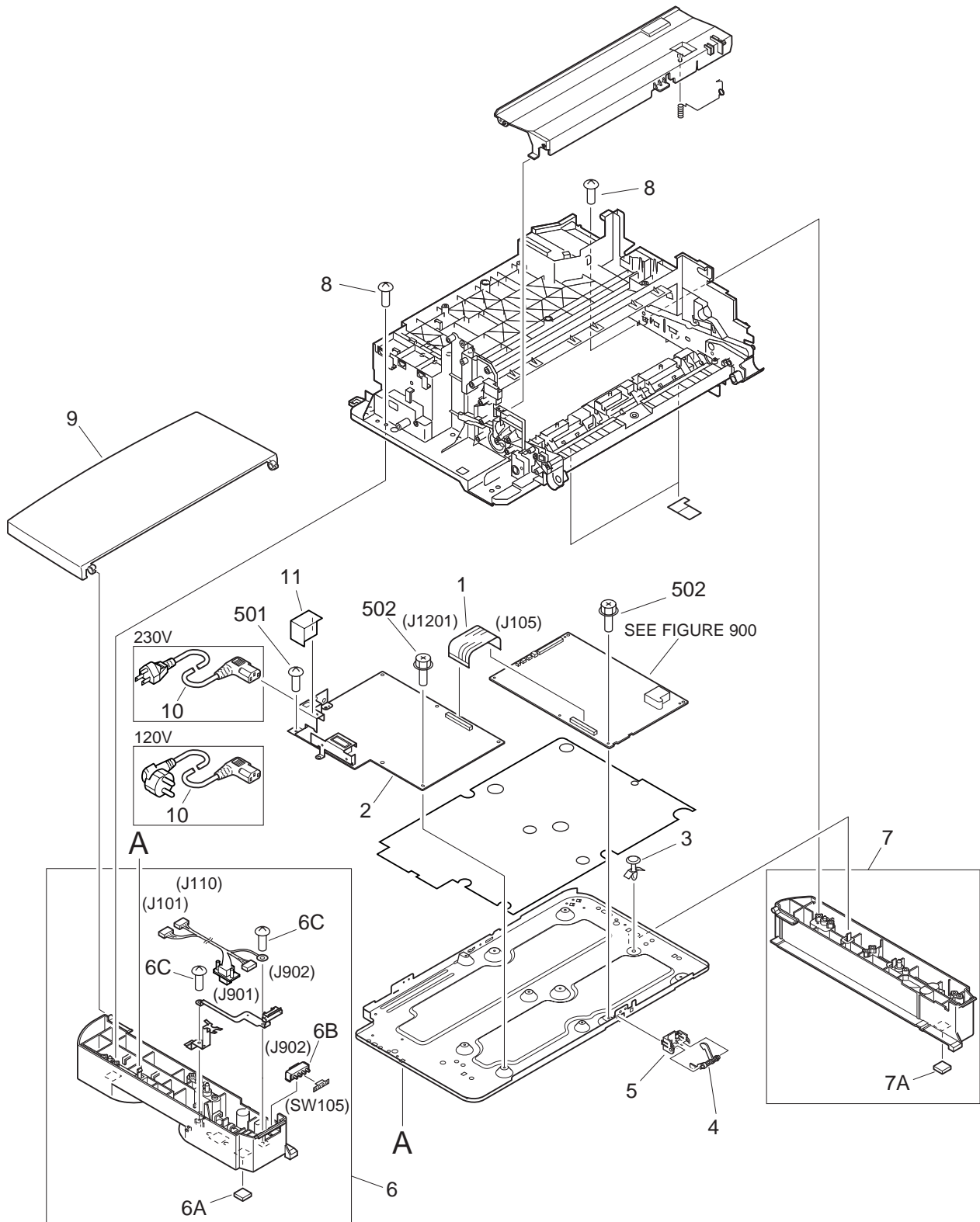
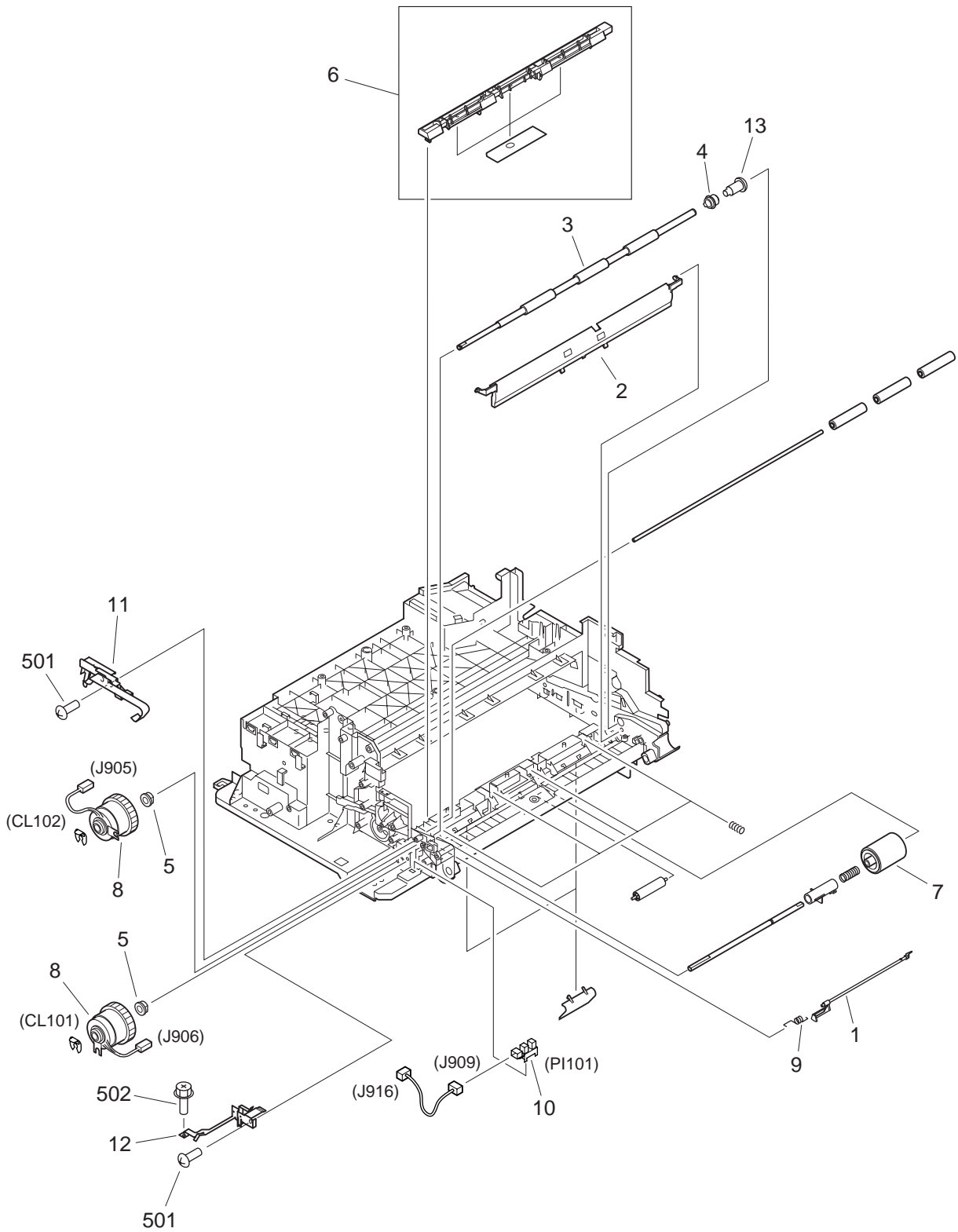


FIGURE & KEY NO.	PART NUMBER	RANK	QTY	DESCRIPTION	SERIAL NUMBER / REMARKS
104 -	NPN		RF	INTERNAL COMPONENTS 3	
1	FH2-6894-000		1	CABLE, FLAT, 35P	J105, J1201
2	FH3-2607-000		1	DC POWER SUPPLY UNIT	120V
	FH3-2609-000		1	DC POWER SUPPLY UNIT	230V
3	VT2-0001-003		1	SUPPORT, PCB	
4	FB5-8063-000		1	FLAG, SENSOR	
5	FB5-8064-000		1	HOLDER, SENSOR	
6	FG6-7125-000		1	RAIL, CASSETTE, LEFT	
6A	FB5-8159-000		1	FOOT, RUBBER	
6B	WC2-5332-000		1	SWITCH, CASSETTE SIZE	SW105, J902
6C	XA9-0606-000		2	SCREW, M4X10	
7	FF6-0974-000		1	RAIL, CASSETTE, RIGHT	
7A	FB5-8159-000		1	FOOT, RUBBER	
8	FC1-6852-000		6	SCREW, M4X20	
9	FB5-8165-000		1	COVER, CASSETTE DUST	
10	WT3-5052-000		1	POWER CORD, 230V	230V
	WT3-5147-000		1	POWER CORD, 120V	120V
11	FB6-2365-000		1	SHIELD	
501	XB2-7300-606		1	SCREW,W/WASHER,M3X6	
502	XB3-6300-800		11	SCREW,RS,M3X8	

# FIGURE 105 INTERNAL COMPONENTS 4



NOTE : Replace the parts shown with key No. 7 in FIGURE 105 and key No. 5, 7 in FIGURE 300 at the same time.

FIGURE & KEY NO.	PART NUMBER	R A N K	Q' T Y	DESCRIPTION	SERIAL NUMBER / REMARKS
105 -	NPN		RF	INTERNAL COMPONENTS 4	
1	FB5-8047-000		1	FLAG, SENSOR	
2	FB5-8051-000		1	DEFLECTOR, PICK-UP	
3	FB6-2363-000		1	ROLLER, FEED	
4	FB5-8053-000		1	BUSHING	
5	FB5-8158-000		2	BUSHING	
6	FF6-0968-000		1	GUIDE, ROLLER	
7	FF6-0981-000		1	ROLLER, CASSETTE PICK-UP	SEE NOTE
8	FH7-5996-000		2	CLUTCH, ELECTROMAGNETIC	CL101, CL102 J906, J905
9	FS7-2590-000		1	SPRING, TORSION	
10	WG8-5509-000		1	PHOTO-INTERRUPTER	PI101, J909
11	FB5-8081-000		1	SPRING, LEAF	
12	FB5-8082-000		1	SPRING, LEAF	
13	RS1-9014-000		1	SCREW, STEPPED	
501	XB4-7401-009		2	SCREW, TAPPING, TRUSS HEAD, M4X10	
502	XB3-6300-800		1	SCREW, RS, M3X8	

# FIGURE 106 INTERNAL COMPONENTS 5

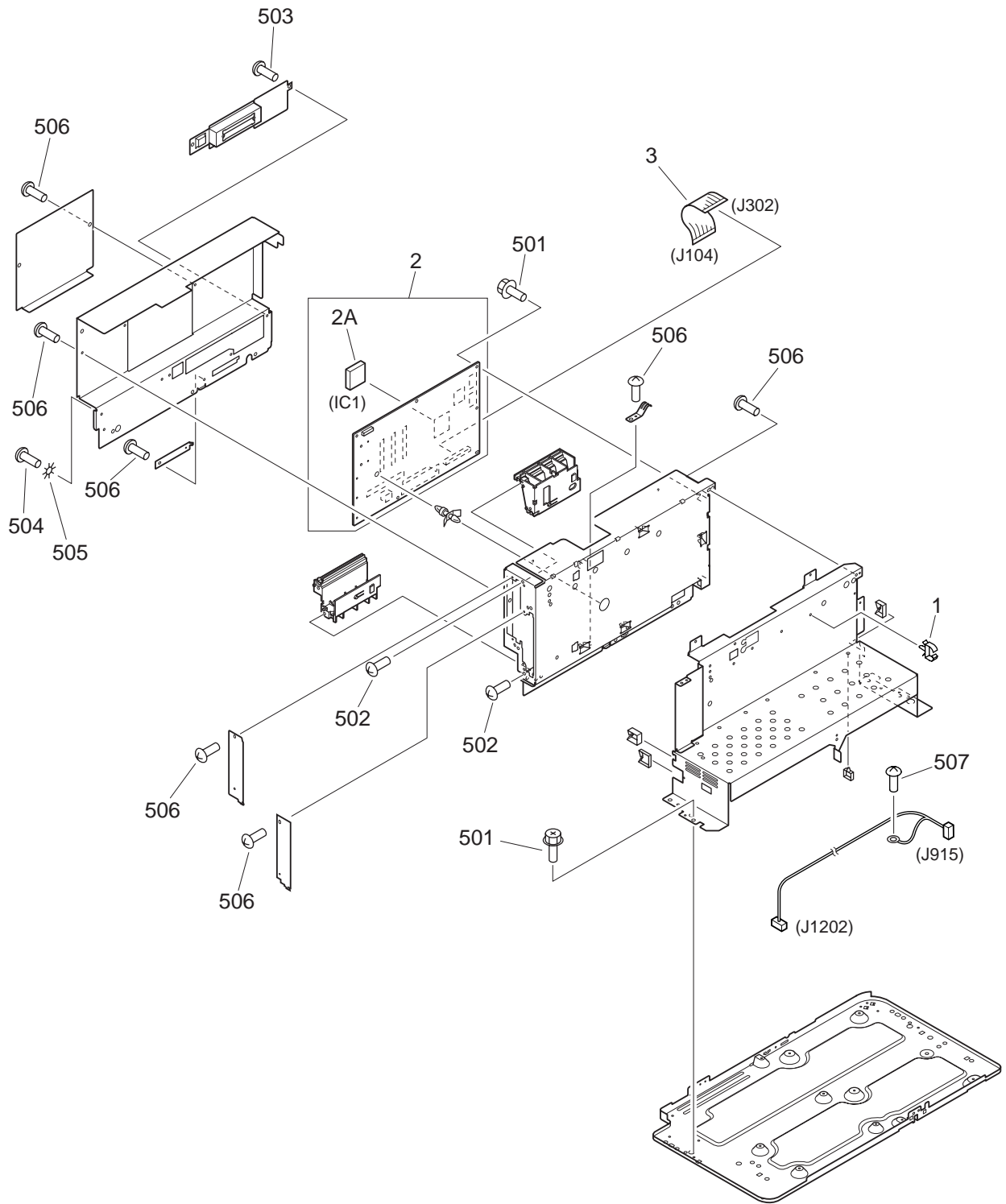


FIGURE & KEY NO.	PART NUMBER	RANK	QTY	DESCRIPTION	SERIAL NUMBER / REMARKS
106 -	NPN		RF	INTERNAL COMPONENTS 5	
1	WT2-0434-000		5	CLIP, CABLE	
2	FG3-1916-000		1	VIDEO CONTROLLER PCB ASS'Y	
2A	FH4-6170-000		1	IC, 06K8141, C-MOS	IC1
3	FH2-6893-000		1	CABLE, FLAT, 34P	J104, J302
501	XB3-6300-800		5	SCREW,RS,M3X8	
502	XB4-7401-009		4	SCREW,TAPPING,TRUSS HEAD,M4X10	
503	XB1-1300-606		2	SCREW,MACH.,PAN HEAD,M3X6	
504	XB1-2400-603		1	SCREW,MACH.,TRUSS HEAD,M4X6	
505	XD1-4200-402		1	WASHER,TOOTHED LOCK	
506	XB1-2300-606		14	SCREW,MACH.,TRUSS HEAD,M3X6	
507	XB2-7300-606		1	SCREW,W/WASHER,M3X6	

# FIGURE 260 PRINTER DRIVE ASS'Y

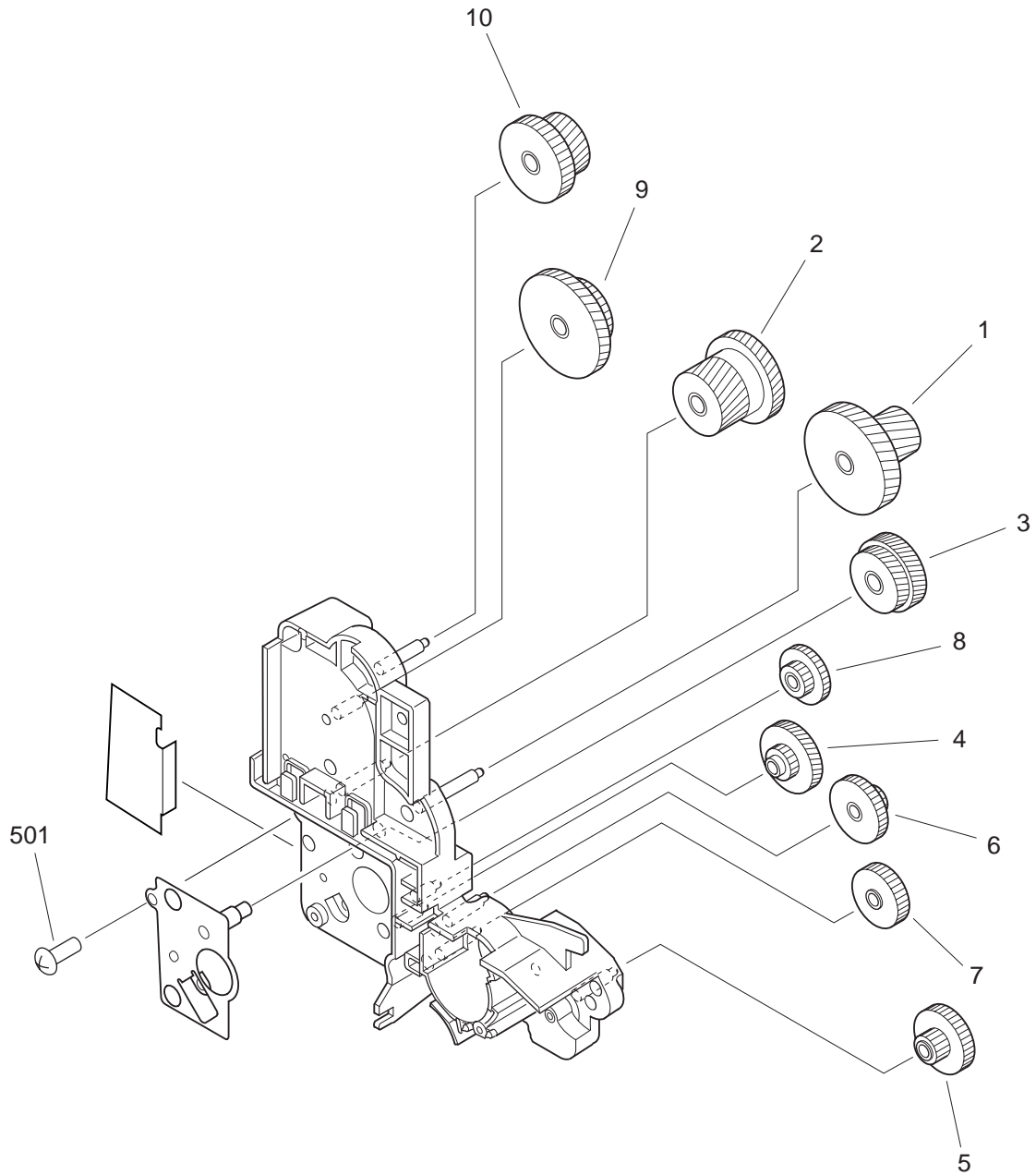
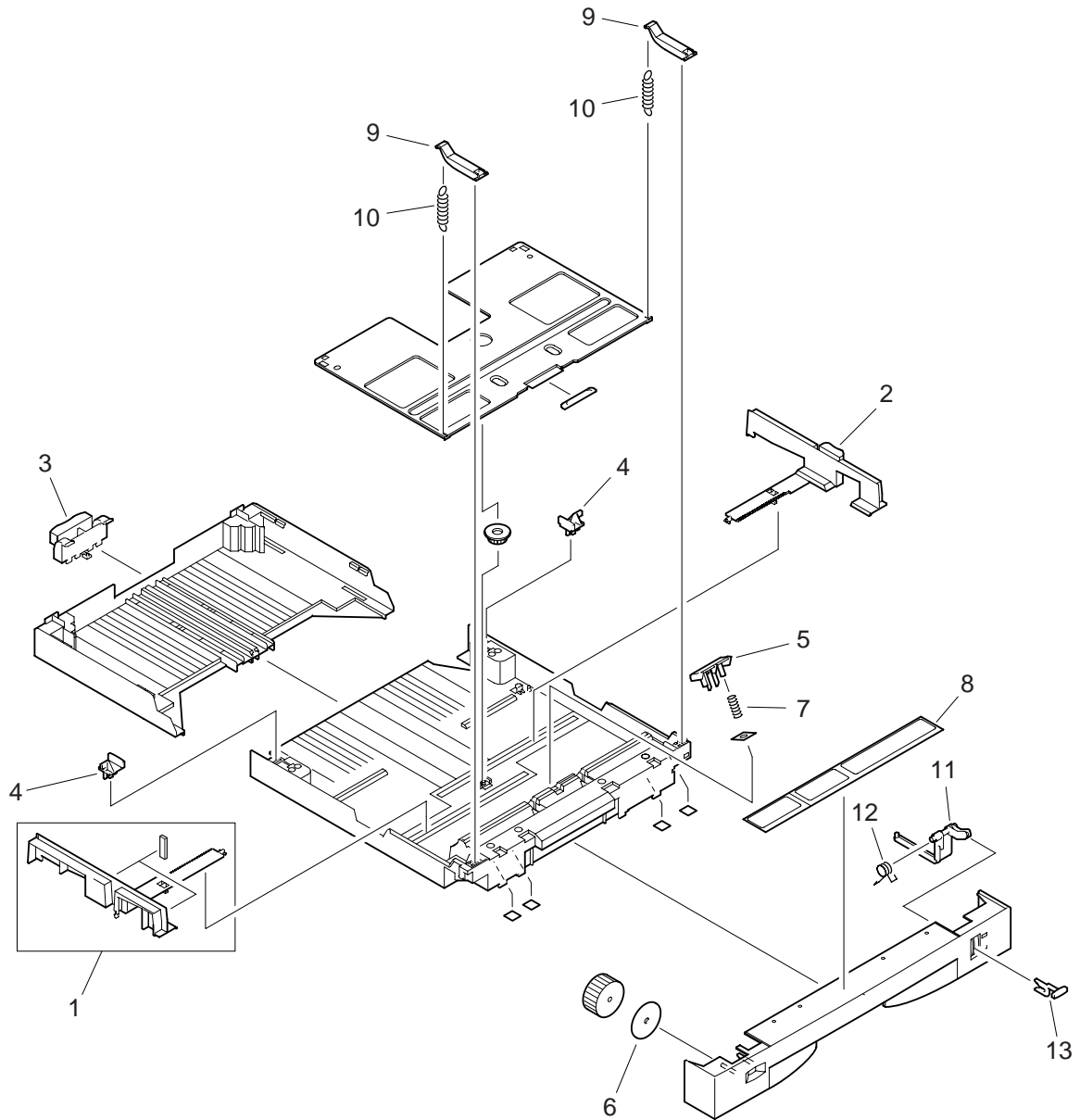




FIGURE & KEY NO.	PART NUMBER	RANK	QTY	DESCRIPTION	SERIAL NUMBER / REMARKS
260 -	NPN		RF	PRINTER DRIVE ASS'Y	
1	FS7-0968-000		1	GEAR, 18T/44T	
2	FS7-0969-000		1	GEAR, 27T/46T	
3	FS7-0970-000		1	GEAR, 32T/62T	
4	FS7-0971-000		1	GEAR, 17T/58T	
5	FS7-0972-000		1	GEAR, 15T/36T	
6	FS7-0973-000		1	GEAR, 14T/35T	
7	FS7-0974-000		1	GEAR, 33T	
8	FS7-0975-000		1	GEAR, 17T/31T	
9	FS7-0976-000		1	GEAR, 29T/44T	
10	FS7-0977-000		1	GEAR, 26T/36T	
501	XB4-7401-009		1	SCREW,TAPPING,TRUSS HEAD,M4X10	

# FIGURE 300 CASSETTE



NOTE : Replace the parts shown with key No. 5, 7 in FIGURE 300 and key No. 7 in FIGURE 105 at the same time.

FIGURE & KEY NO.	PART NUMBER	R A N K	Q' T Y	DESCRIPTION	SERIAL NUMBER / REMARKS
300 -	NPN		RF	CASSETTE	
1	FF6-1833-000		1	GUIDE, SIDE PAPER END, LEFT	
2	FB5-8094-000		1	GUIDE, SIDE PAPER END, RIGHT	
3	FB5-8095-000		1	PLATE, LENGTH ADJUSTMENT	
4	FB5-8097-000		2	BLOCK, SIZE	
5	FB5-8099-000		1	HOLDER, SEPARATION PAD	SEE NOTE
6	FS7-8266-000		1	LABEL, SIZE	
7	FS7-2593-000		1	SPRING, COMPRESSION	SEE NOTE
8	FS7-8265-000		1	LABEL, PAPER SET	
9	FB5-8096-000		2	LEVER, PAPER LIFTING PLATE	
10	FS7-2592-000		2	SPRING, TENSION	
11	FB5-8101-000		1	LEVER, PAPER LEVEL	
12	FS7-2594-000		1	SPRING, TORSION	
13	FB5-8102-000		1	ARM, PAPER LEVEL	

# FIGURE 310 PICK-UP GUIDE ASS'Y

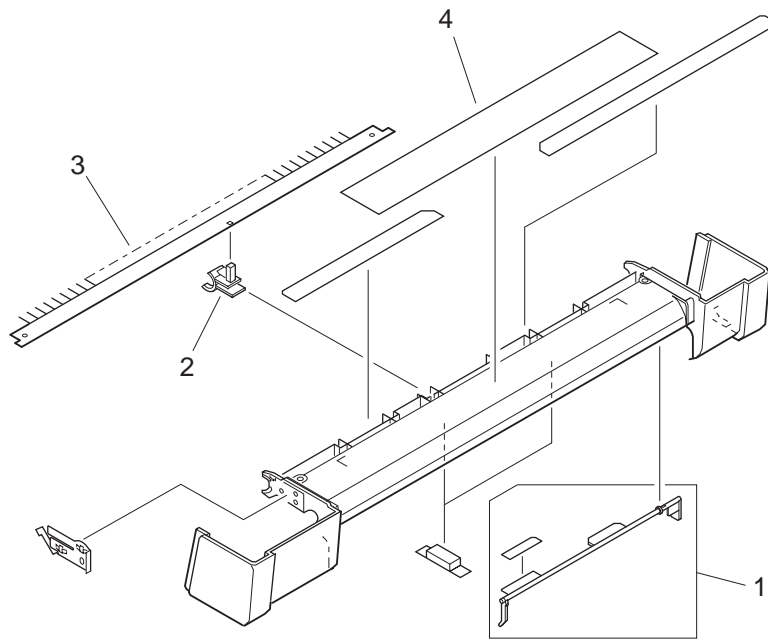


FIGURE & KEY NO.	PART NUMBER	RANK	QTY	DESCRIPTION	SERIAL NUMBER / REMARKS
310 -	FG6-7118-000		1	PICK-UP GUIDE ASS'Y	
1	FF6-0970-000		1	FLAG, SENSOR	
2	FB5-8026-000		1	BUSHING	
3	FB5-8027-000		1	ELIMINATOR,STATIC CHARGE	
4	FS7-8264-000		1	LABEL, JAM RECOVERY	
-----					
-----					



FIGURE 315 MULTI-PURPOSE TRAY ASS'Y

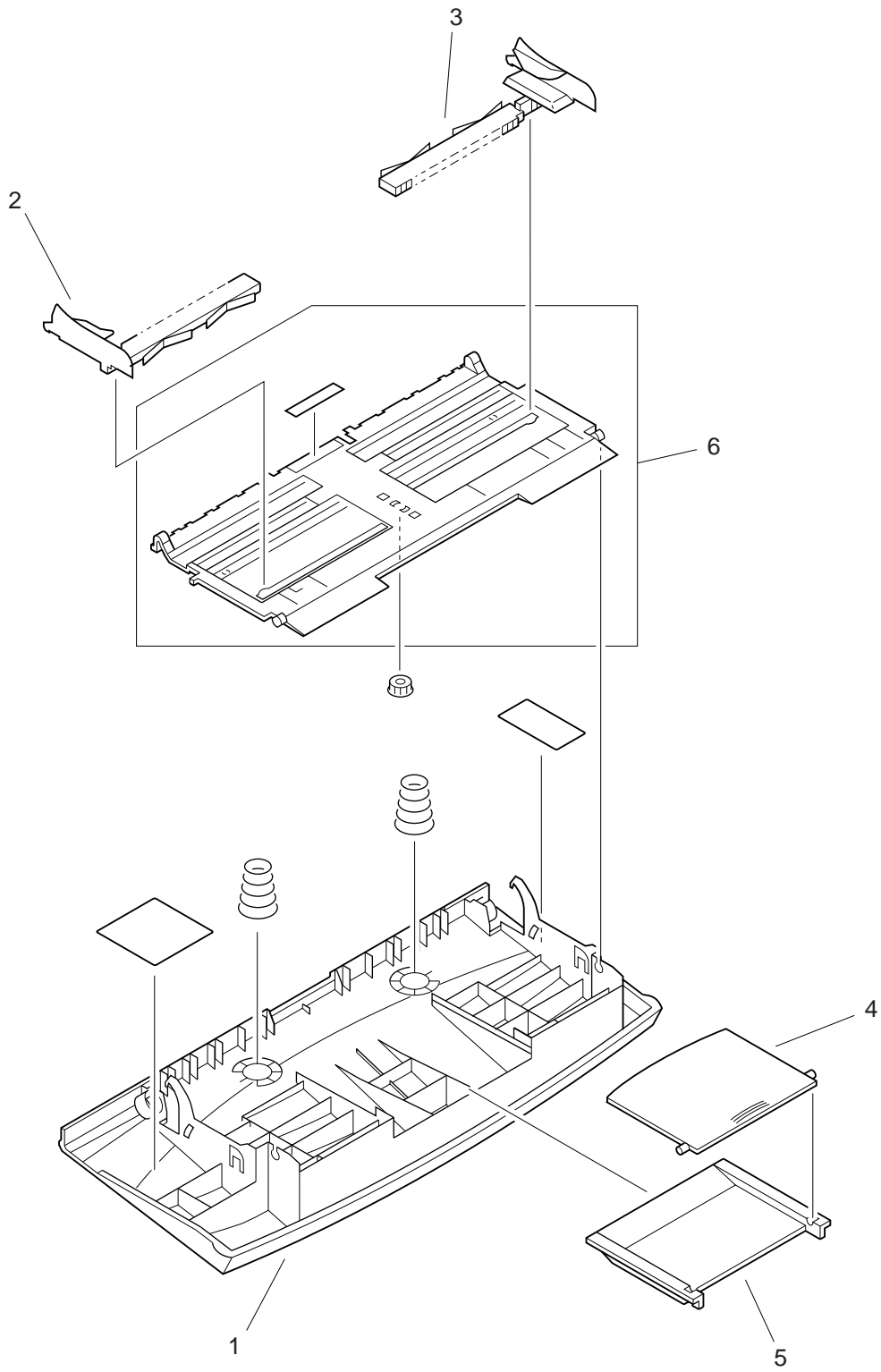


FIGURE & KEY NO.	PART NUMBER	RANK	QTY	DESCRIPTION	SERIAL NUMBER / REMARKS
315 -	NPN		RF	MULTI-PURPOSE TRAY ASS'Y	
1	FB5-8033-000		1	COVER, MULTI-PURPOSE TRAY	
2	FB5-8036-000		1	GUIDE, SIDE PAPER END, LEFT	
3	FB5-8037-000		1	GUIDE, SIDE PAPER END, RIGHT	
4	FB5-8038-000		1	TRAY, SUB, 1	
5	FB5-8039-000		1	TRAY, SUB, 2	
6	FF6-1835-000		1	TRAY, MULTI-PURPOSE	

FIGURE 810 FIXING ASS'Y

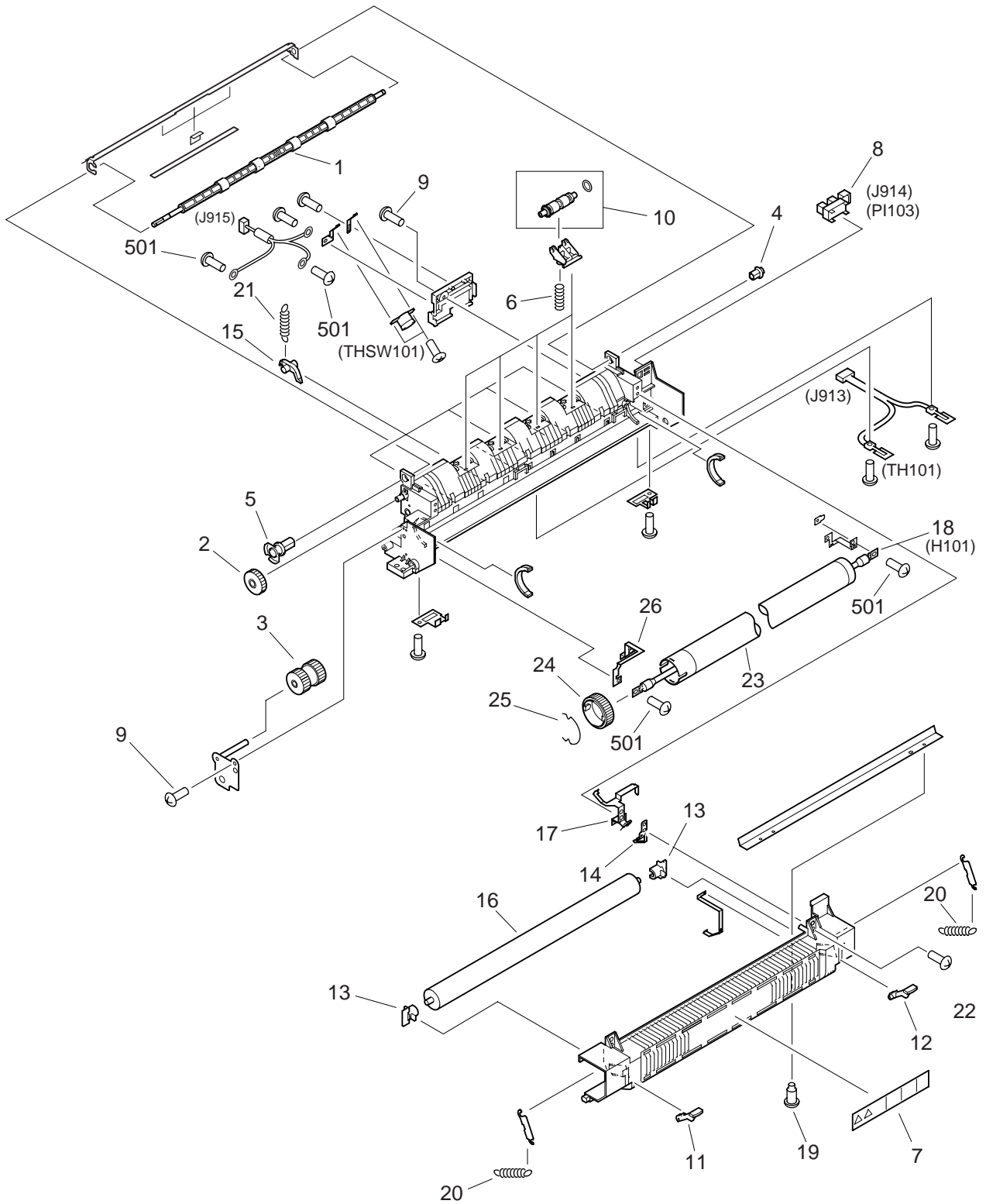




FIGURE & KEY NO.	PART NUMBER	R A N K	Q' T Y	DESCRIPTION	SERIAL NUMBER / REMARKS
810 -	FG6-7621-000		1	FIXING ASS'Y	230V
	FG6-8567-000		1	FIXING ASS'Y	120V
1	FF6-0973-000		1	ROLLER, DELIVERY	
2	FS7-0981-000		1	GEAR, 21T	
3	FS7-0983-000		1	GEAR, 25T	
4	FB5-8126-000		1	BUSHING	
5	FB5-8129-000		1	BUSHING	
6	FS7-2598-000		4	SPRING, COMPRESSION	
7	FS7-8267-000		1	LABEL, CAUTION	
8	WG8-5509-000		1	PHOTO-INTERRUPTER	PI103, J914
9	XA9-1279-000		2	SCREW,W/WASHER,M3X8	
10	RG9-1337-000		4	ROLLER, DELIVERY	
11	FB5-8122-020		1	LEVER, RELEASE, LEFT	
12	FB5-8123-020		1	LEVER, RELEASE, RIGHT	
13	FB5-8125-000		2	BUSHING	
14	FB5-8130-000		1	ELIMINATOR, STATIC CHARGE	
15	FB5-8143-000		5	CLAW, SEPARATION	
16	FB5-8145-000		1	ROLLER, PRESSURE	
17	FB5-8150-000		1	ELIMINATOR, STATIC CHARGE	
18	FH7-4697-000		1	HALOGEN HEATER	120V H101
	FH7-4698-000		1	HALOGEN HEATER	230V H101
19	FS1-9010-000		2	SCREW, STEPPED, M3X2.2	
20	FS7-2595-000		2	SPRING, TENSION	
21	FS7-2596-000		5	SPRING, TENSION	
22	XA9-1206-000		2	SCREW,W/WASHER,M4X12	
23	FB5-8132-010		1	ROLLER, FIXING	
24	FS7-0984-000		1	GEAR, 36T	
25	FS7-2597-000		1	SUPPORT, GEAR	
26	FF6-1838-000		1	PLATE, CONTACT	
501	XB2-8300-807		4	SCREW,W/WASHER,M3X8	

# FIGURE 900 PCB ASS'Y LOCATION DIAGRAM

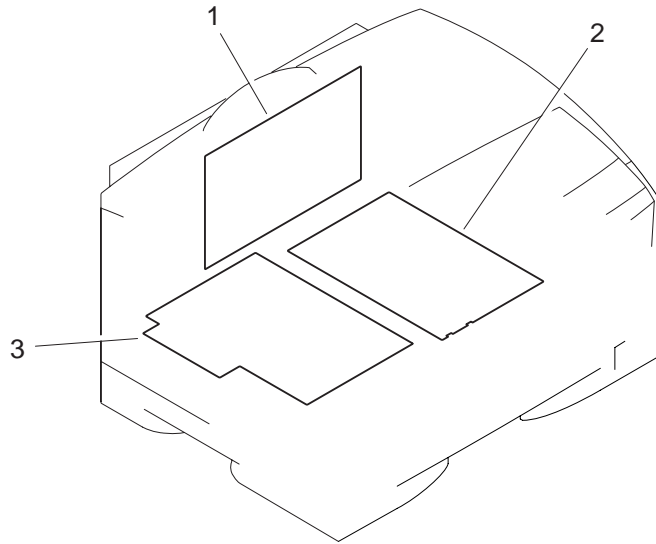


FIGURE & KEY NO.	PART NUMBER	RANK	QTY	DESCRIPTION	SERIAL NUMBER / REMARKS
900 -	NPN		RF	PCB ASS'Y LOCATION DIAGRAM	
1	FG3-1916-000		1	VIDEO CONTROLLER PCB ASS'Y	
2	FG3-1542-000		1	ENGINE CONTROLLER PCB ASS'Y	
3	FH3-2607-000		1	DC POWER SUPPLY UNIT	120V
	FH3-2609-000		1	DC POWER SUPPLY UNIT	230V
-----					
-----					
-----					

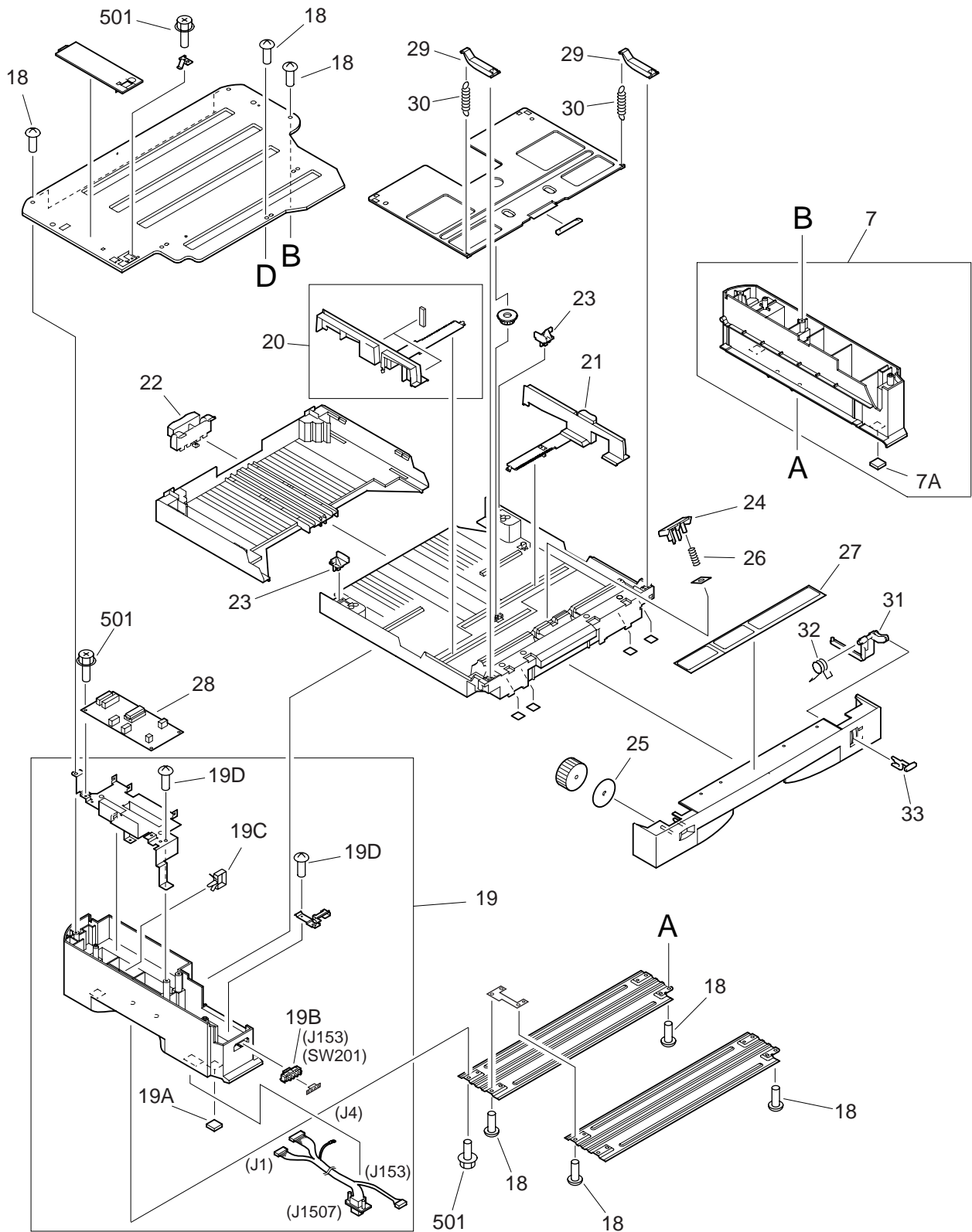
# PAPER FEEDER

ペーパーフィーダー

ペーパーフィーダー PF-65  
[ F25-7901 ]



# FIGURE R11 INTERNAL COMPONENTS (1/2)



NOTE : Replace the parts shown with key No. 8, 24 and 26 in FIGURE R11 at the same time.

# FIGURE R11 INTERNAL COMPONENTS (2/2)

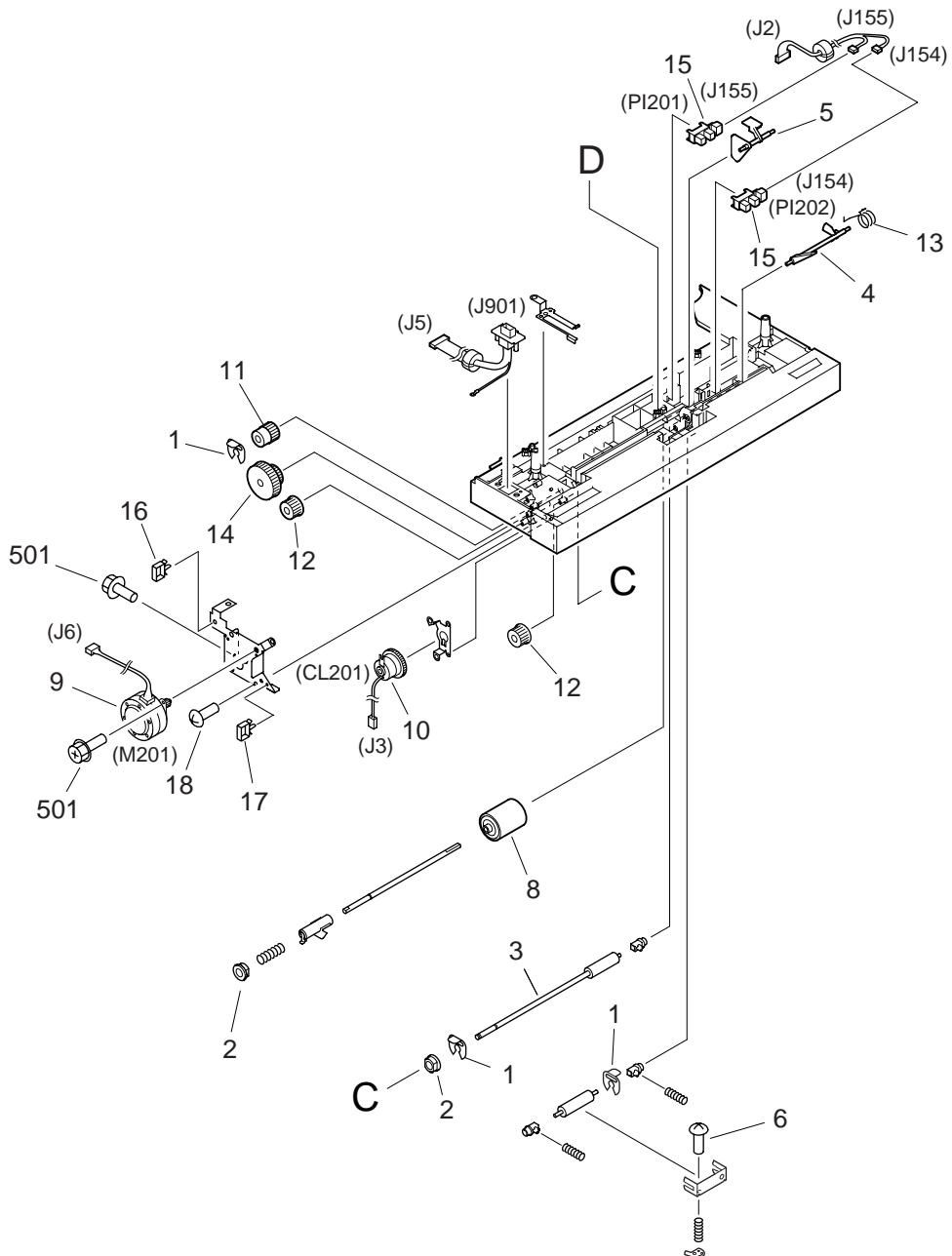


FIGURE & KEY NO.	PART NUMBER	RANK	QTY	DESCRIPTION	SERIAL NUMBER / REMARKS
R11 -	NPN		RF	INTERNAL COMPONENTS	
1	FB4-2007-000		3	RING, RETAINING	
2	FB5-8158-000		2	BUSHING	
3	FB5-8271-000		1	ROLLER, FEED	
4	FB5-8273-000		1	FLAG, SENSOR	
5	FB5-8275-000		1	FLAG, SENSOR	
6	FS5-9711-000		1	SCREW,PT,M3X16	
7	FF6-0932-000		1	RAIL, CASSETTE, RIGHT	
7A	FB5-8159-000		1	FOOT, RUBBER	
8	FF6-0981-000		1	ROLLER, CASSETTE PICK-UP	SEE NOTE
9	FH6-1840-000		1	MOTOR, STEPPING, DC 10W UNDER	M201,J6
10	FH6-5004-000		1	CLUTCH, EM	CL201, J3
11	FS7-0998-000		1	GEAR, 17T	
12	FS7-0999-000		2	GEAR, 17T	
13	FS7-2615-000		1	SPRING, TORSION	
14	FU3-0001-000		1	GEAR, 58T/20T	
15	WG8-5509-000		2	PHOTO-INTERRUPTER	PI201, PI202, J155, J154
16	WT2-0317-000		1	CLIP, CABLE	
17	WT2-0434-000		1	CLIP, CABLE	
18	XA9-0606-000		21	SCREW, M4X10	
19	FG6-7059-000		1	RAIL, CASSETTE, LEFT	
19A	FB5-8159-000		1	FOOT, RUBBER	
19B	WC2-5332-000		1	SWITCH, CASSETTE SIZE	SW201, J153
19C	WT2-0317-000		1	CLIP, CABLE	
19D	XA9-0606-000		2	SCREW, M4X10	
20	FF6-1833-000		1	GUIDE, SIDE PAPER END, LEFT	
21	FB5-8094-000		1	GUIDE, SIDE PAPER END, RIGHT	
22	FB5-8095-000		1	PLATE, LENGTH ADJUSTMENT	
23	FB5-8097-000		2	BLOCK, SIZE	
24	FB5-8099-000		1	HOLDER, SEPARATION PAD	SEE NOTE

FIGURE & KEY NO.	PART NUMBER	RANK	QTY	DESCRIPTION	SERIAL NUMBER / REMARKS
R11 - 25	FS7-8266-000		1	LABEL, SIZE	
26	FS7-2593-000		1	SPRING, COMPRESSION	SEE NOTE
27	FS7-8265-000		1	LABEL, PAPER SET	
28	FG3-1549-000		1	FEEDER DRIVER PCB ASS'Y	
29	FB5-8096-000		2	LEVER, PAPER LIFTING PLATE	
30	FS7-2592-000		2	SPRING, TENSION	
31	FB5-8101-000		1	LEVER, PAPER LEVEL	
32	FS7-2594-000		1	SPRING, TORSION	
33	FB5-8102-000		1	ARM, PAPER LEVEL	
501	XB3-6300-800		7	SCREW,RS,M3X8	



# FIGURE R90 PCB ASS'Y LOCATION DIAGRAM

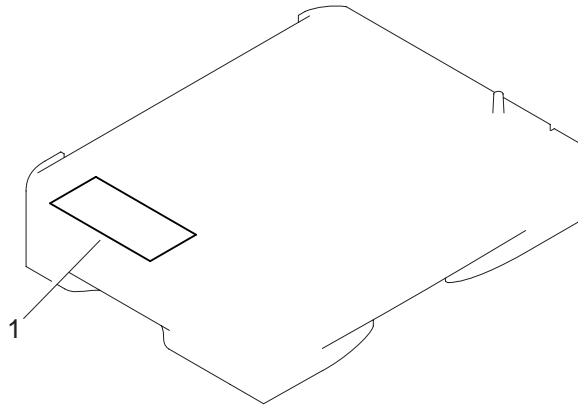


FIGURE & KEY NO.	PART NUMBER	RANK	QTY	DESCRIPTION	SERIAL NUMBER / REMARKS
R90 -	NPN		RF	PCB ASS'Y LOCATION DIAGRAM	
1	FG3-1549-000		1	FEEDER DRIVER PCB ASS'Y	

# HARD DISK

## ハードディスク

Hard Disk HD-65  
[ F61-8807 ]



# FIGURE V10 HARD DISK DRIVE

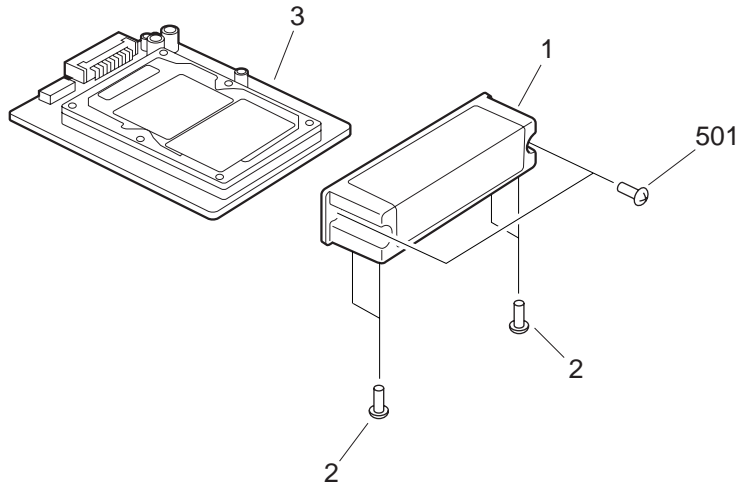


FIGURE & KEY NO.	PART NUMBER	RANK	QTY	DESCRIPTION	SERIAL NUMBER / REMARKS
V10 -	NPN		RF	HARD DISK DRIVE	
1	RB2-6611-000		1	COVER, HARD DISK DRIVE	
2	XA9-1223-000		4	SCREW, TP, M3X6	
3	FG3-2162-000		1	HARD DISK (BLANK)	
501	XB1-1300-807		2	SCREW, MACH., PAN HEAD, M3X8	
-----					
-----					



# NETWORK BOARD

## ネットワークボード

Ethernet Board EB-65  
[ F61-8805 ]



# FIGURE V11 NETWORK BOARD PCB ASS'Y

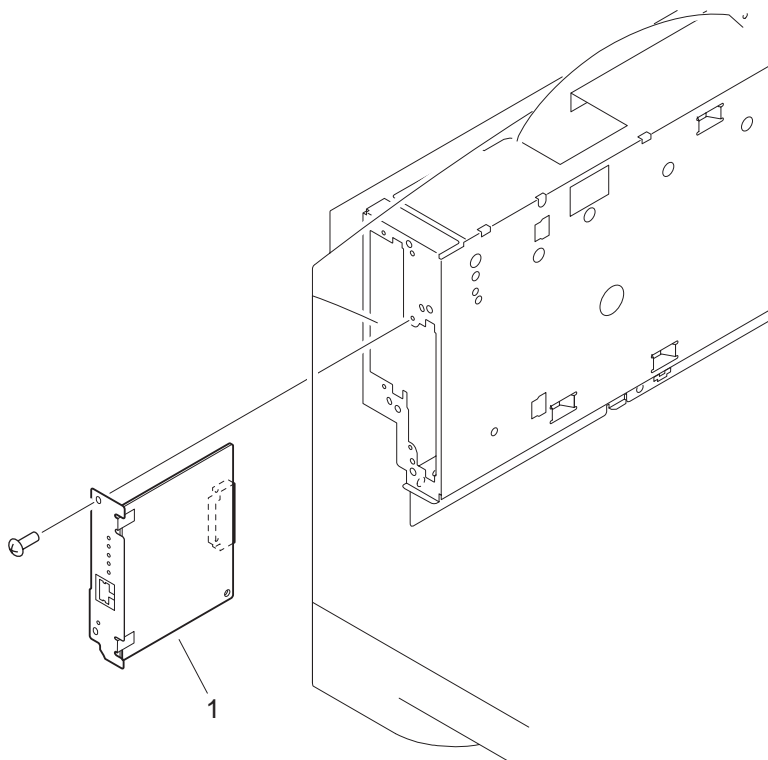


FIGURE & KEY NO.	PART NUMBER	RANK	QTY	DESCRIPTION	SERIAL NUMBER / REMARKS
V11 -	NPN		RF	NETWORK BOARD PCB ASS'Y	
1	FH5-3236-000		1	BUILT-IN PRINT SER. PCB ASS'Y	





# OPTION ROM

# オプション ROM

Adobe Postscript3 Module A-65  
[ F61-8802 ]

Flash ROM Module FR-65  
[ F61-8806 ]



# FIGURE E10 OPTION ROM

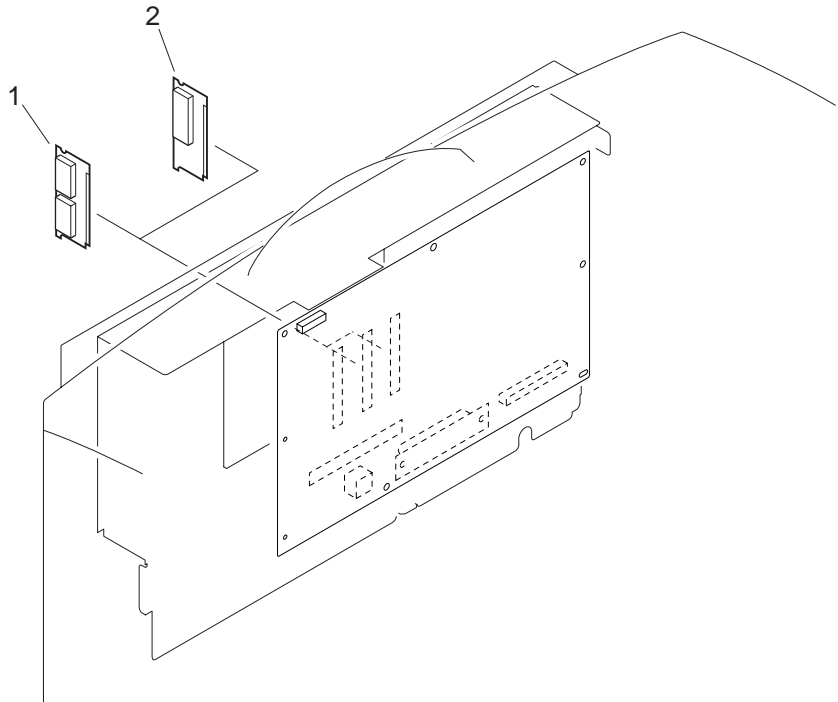


FIGURE & KEY NO.	PART NUMBER	RANK	QTY	DESCRIPTION	SERIAL NUMBER / REMARKS
E10 -	NPN		RF	OPTION ROM	
1	FG3-1918-000	N	1	FLASH-ROM DIMM ASS'Y FR-65	Module FR-65
2	FG3-1917-000	N	1	PS3 FLASH-ROM DIMM ASS'Y A-65	Module A-65
-----					
-----					



# B1 NUMERICAL INDEX (LBP-2000)

PART NUMBER	FIGURE & KEY NO.	PART NUMBER	FIGURE & KEY NO.	PART NUMBER	FIGURE & KEY NO.
FB5-8010-000	100 - 10	FH4-6170-000	106 - 2A		
FB5-8011-000	100 - 3	FH6-1835-000	103 - 4		
FB5-8012-000	100 - 4	FH6-1837-000	102 - 4		
FB5-8013-000	100 - 11	FH6-5001-000	102 - 5		
FB5-8015-000	100 - 5	FH7-4697-000	810 - 18		
FB5-8019-000	100 - 6	FH7-4698-000	810 - 18		
FB5-8020-000	100 - 7	FH7-5996-000	105 - 8		
FB5-8026-000	310 - 2	FS1-9010-000	810 - 19		
FB5-8027-000	310 - 3	FS1-9170-000	102 - 9		
FB5-8028-000	102 - 1	FS5-9707-000	102 - 10		
FB5-8032-000	102 - 2	FS7-0968-000	260 - 1		
FB5-8033-000	315 - 1	FS7-0969-000	260 - 2		
FB5-8036-000	315 - 2	FS7-0970-000	260 - 3		
FB5-8037-000	315 - 3	FS7-0971-000	260 - 4		
FB5-8038-000	315 - 4	FS7-0972-000	260 - 5		
FB5-8039-000	315 - 5	FS7-0973-000	260 - 6		
FB5-8047-000	105 - 1	FS7-0974-000	260 - 7		
FB5-8051-000	105 - 2	FS7-0975-000	260 - 8		
FB5-8053-000	105 - 4	FS7-0976-000	260 - 9		
FB5-8063-000	104 - 4	FS7-0977-000	260 - 10		
FB5-8064-000	104 - 5	FS7-0979-000	100 - 8		
FB5-8077-000	103 - 8	FS7-0981-000	810 - 2		
FB5-8078-000	103 - 9	FS7-0982-000	102 - 6		
FB5-8079-000	103 - 10	FS7-0983-000	810 - 3		
FB5-8080-000	103 - 11	FS7-0984-000	810 - 24		
FB5-8081-000	105 - 11	FS7-2590-000	105 - 9		
FB5-8082-000	105 - 12	FS7-2592-000	300 - 10		
FB5-8094-000	300 - 2	FS7-2593-000	300 - 7		
FB5-8095-000	300 - 3	FS7-2594-000	300 - 12		
FB5-8096-000	300 - 9	FS7-2595-000	810 - 20		
FB5-8097-000	300 - 4	FS7-2596-000	810 - 21		
FB5-8099-000	300 - 5	FS7-2597-000	810 - 25		
FB5-8101-000	300 - 11	FS7-2598-000	810 - 6		
FB5-8102-000	300 - 13	FS7-2600-000	103 - 13		
FB5-8106-000	103 - 12	FS7-2601-000	102 - 8C		
FB5-8110-000	101 - 1	FS7-8264-000	310 - 4		
FB5-8111-000	101 - 2	FS7-8265-000	300 - 8		
FB5-8112-000	100 - 1	FS7-8266-000	300 - 6		
FB5-8113-000	100 - 2	FS7-8267-000	810 - 7		
FB5-8115-000	103 - 6	RG9-1337-000	810 - 10		
FB5-8122-020	810 - 11	RS1-9014-000	105 - 13		
FB5-8123-020	810 - 12	VT2-0001-003	104 - 3		
FB5-8125-000	810 - 13	WC2-5332-000	104 - 6B		
FB5-8126-000	810 - 4	WC4-5126-000	103 - 1		
FB5-8127-000	102 - 8B		103 - 2		
FB5-8129-000	810 - 5	WG8-5509-000	102 - 7		
FB5-8130-000	810 - 14		105 - 10		
FB5-8132-010	810 - 23		810 - 8		
FB5-8143-000	810 - 15	WT2-0434-000	103 - 7		
FB5-8145-000	810 - 16		106 - 1		
FB5-8150-000	810 - 17	WT2-5498-000	103 - 14		
FB5-8158-000	105 - 5	WT3-5052-000	104 - 10		
FB5-8159-000	104 - 6A	WT3-5147-000	104 - 10		
	104 - 7A	XA9-0606-000	100 - 9		
FB5-8165-000	104 - 9		100 - 12		
FB6-2348-000	102 - 11		104 - 6C		
FB6-2351-000	102 - 8A	XA9-1206-000	103 - 5		
FB6-2363-000	105 - 3		810 - 22		
FB6-2365-000	104 - 11	XA9-1279-000	810 - 9		
FC1-6852-000	104 - 8	XB1-1300-606	106 - 503		
FF6-0968-000	105 - 6	XB1-2300-606	100 - 501		
FF6-0970-000	310 - 1		101 - 501		
FF6-0973-000	810 - 1		103 - 504		
FF6-0974-000	104 - 7		106 - 506		
FF6-0981-000	105 - 7	XB1-2400-603	106 - 504		
FF6-1833-000	300 - 1	XB2-7300-606	103 - 501		
FF6-1834-000	102 - 3		104 - 501		
FF6-1835-000	315 - 6		106 - 507		
FF6-1838-000	810 - 26	XB2-8300-807	810 - 501		
FG3-1542-000	900 - 2	XB3-6300-800	104 - 502		
FG3-1916-000	106 - 2	XB3-6300-800	105 - 502		
	900 - 1		106 - 501		
FG6-7118-000	310 -	XB4-7401-009	102 - 501		
FG6-7125-000	104 - 6		103 - 502		
FG6-7127-000	103 - 3		105 - 501		
FG6-7135-000	101 - 3		106 - 502		
FG6-7619-000	102 - 8		260 - 501		
FG6-7621-000	810 -	XB4-7401-609	103 - 505		
FG6-8567-000	810 -	XB4-7403-509	103 - 503		
FH2-6893-000	106 - 3	XD1-4200-402	106 - 505		
FH2-6894-000	104 - 1				
FH3-2607-000	104 - 2				
FH3-2607-000	900 - 3				
FH3-2609-000	104 - 2				
	900 - 3				

# B2 NUMERICAL INDEX (PAPER FEEDER / HARD DISK / NETWORK BOARD / OPTION ROM)

PART NUMBER	FIGURE & KEY NO.	PART NUMBER	FIGURE & KEY NO.	PART NUMBER	FIGURE & KEY NO.
FB4-2007-000	R11 - 1				
FB5-8094-000	R11 - 21				
FB5-8095-000	R11 - 22				
FB5-8096-000	R11 - 29				
FB5-8097-000	R11 - 23				
FB5-8099-000	R11 - 24				
FB5-8101-000	R11 - 31				
FB5-8102-000	R11 - 33				
FB5-8158-000	R11 - 2				
FB5-8159-000	R11 - 7A				
	R11 - 19A				
FB5-8271-000	R11 - 3				
FB5-8273-000	R11 - 4				
FB5-8275-000	R11 - 5				
FF6-0932-000	R11 - 7				
FF6-0981-000	R11 - 8				
FF6-1833-000	R11 - 20				
FG3-1549-000	R11 - 28				
	R90 - 1				
FG3-1917-000	E10 - 2				
FG3-1918-000	E10 - 1				
FG3-2162-000	V10 - 3				
FG6-7059-000	R11 - 19				
FH5-3236-000	V11 - 1				
FH6-1840-000	R11 - 9				
FH6-5004-000	R11 - 10				
FS5-9711-000	R11 - 6				
FS7-0998-000	R11 - 11				
FS7-0999-000	R11 - 12				
FS7-2592-000	R11 - 30				
FS7-2593-000	R11 - 26				
FS7-2594-000	R11 - 32				
FS7-2615-000	R11 - 13				
FS7-8265-000	R11 - 27				
FS7-8266-000	R11 - 25				
FU3-0001-000	R11 - 14				
RB2-6611-000	V10 - 1				
WC2-5332-000	R11 - 19B				
WG8-5509-000	R11 - 15				
WT2-0317-000	R11 - 16				
	R11 - 19C				
WT2-0434-000	R11 - 17				
XA9-0606-000	R11 - 18				
	R11 - 19D				
XA9-1223-000	V10 - 2				
XB1-1300-807	V10 - 501				
XB3-6300-800	R11 - 501				

Prepared by  
Consumer Imaging Products Quality Assurance Dept.1  
Consumer Imaging Products Quality Assurance Div  
Office Imaging Products Quality Assurance Center

**CANON INC.**

**REVISION 0 [ AUG. 2001 ]**

**5-1, Hakusan 7-chome, Toride-shi, Ibaraki 302-8501, Japan**





This publication is  
printed on 100%  
recycled paper.

**Canon**